

ACCESSORIES

Manifold - 750 Series

Manifolds for multiple installing represent a fast and safe system of fastening and connection for all 750 Series models.

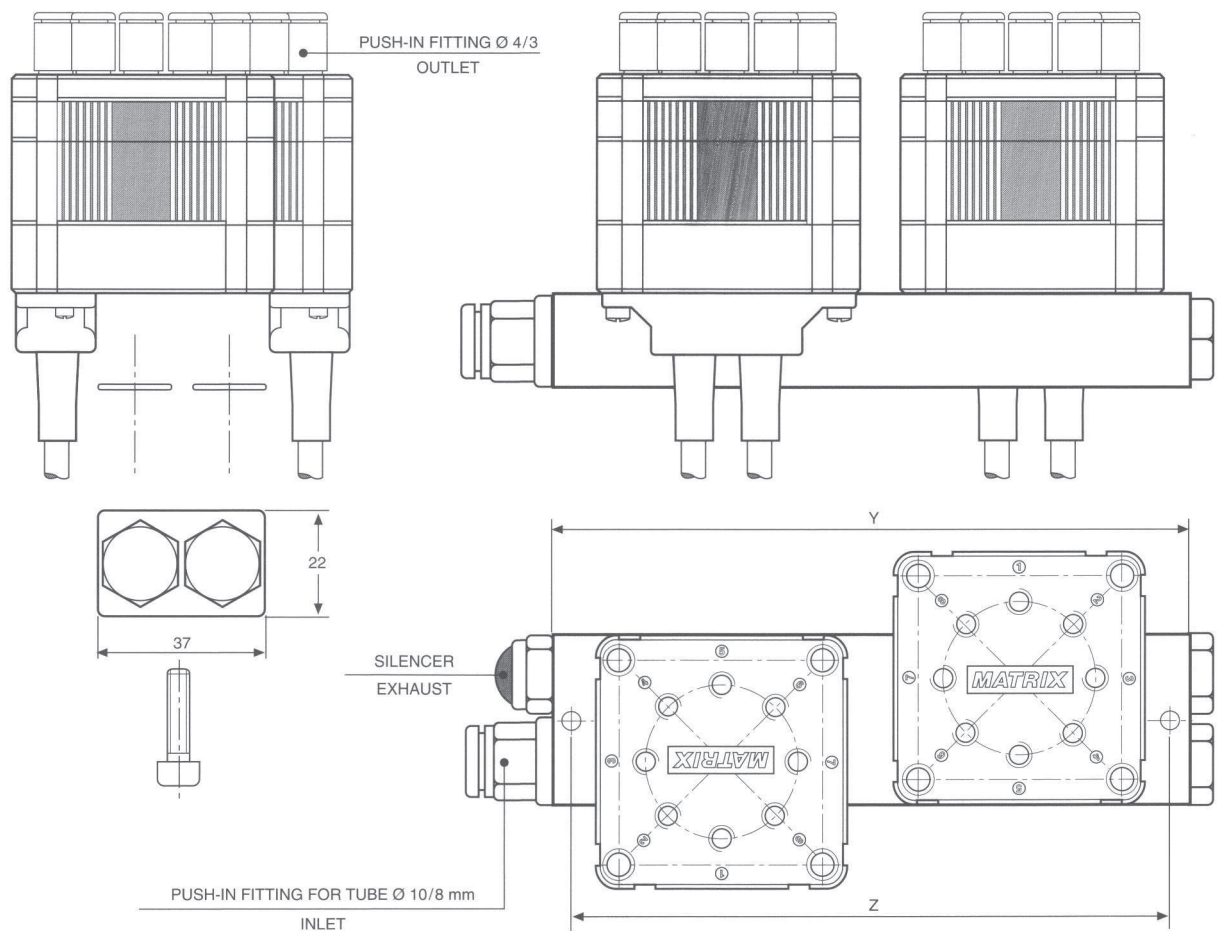
They are suitable for the rationalisation of complex pneumatic systems thanks to their simplicity of the assembly and their total modularity.

Manifolds are available for patterns from 2 to 8 solenoid valves of 750 series and are consistent with Matrix Easy electrical port connection and cables. They come in kit with fastening screws, push-in fittings and sealing O-Rings.

How to order Manifolds - Available patterns

Pattern	Kid code	Y (mm)	Z (mm)
no. 2 Solenoid valves	868.950 E	140	130
no. 3 Solenoid valves	868.951 F	195	65
no. 4 Solenoid valves	868.952 G	260	130
no. 5 Solenoid valves	868.953 H	325	195
no. 6 Solenoid valves	868.954 I	390	260
no. 7 Solenoid valves	868.955 J	455	325
no. 8 Solenoid valves	868.956 K	520	390

2 position manifold. Assembly example of a 750 NC model and a 750 NO model



Manifold - 750 Series

3,4,5,6,7,8 position manifolds.

See previous scheme for Y and Z dimensions and relative ordering codes.

