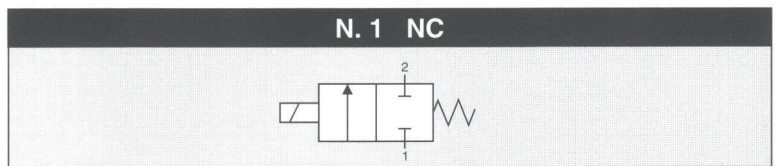


**CONTROL:** PCM



### GENERAL CHARACTERISTICS

<b>FLUID</b>	Non-lubricated dry air, neutral gases (-10 + 50°C)
<b>FILTRATION RATING</b>	Min 40 micron
<b>TEMPERATURE</b>	- 10 + 50°C (Standard version)
<b>RESPONSE TIME IN OPENING</b>	KK < 1 ms
<b>RESPONSE TIME IN CLOSING</b>	KK < 1 ms
<b>MAXIMUM FREQUENCY</b>	500 Hz
<b>WEIGHT</b>	450 g
<b>PRODUCT LIFE EXPECTANCY</b>	≥ 500 M/s cycles
<b>IP RATING</b>	IP 52 - IP 65

### IDENTIFICATION CODE

	P	X	8	6	1	9	E	3	C	2	KK
--	---	---	---	---	---	---	---	---	---	---	----

**• FLOW RATE**

<b>P</b>	N. 64 FLOW RATES	
	Maximum flow	108.39 NI/(min • bar)
	Minimum flow	1.69 NI/(min • bar)
	6-bar flow rate maximum	752.84 NI/min
<b>Q</b>	N. 256 FLOW RATES	
	Maximum flow	72.26 NI/(min • bar)
	Minimum flow	0.28 NI/(min • bar)
	6-bar flow rate maximum	506.13 NI/min

**• OUTLETS**

<b>1</b>	1 Outlet
----------	----------

**• No. ELECTRICAL CONTROLS**

<b>9</b>	9 Controls
----------	------------

**• PORT CONNECTION**

<b>E</b>	Presetting for Easy connection IP 52 - IP 65
----------	---

**• FUNCTION**

<b>C</b>	NC
----------	----

**• TYPE**

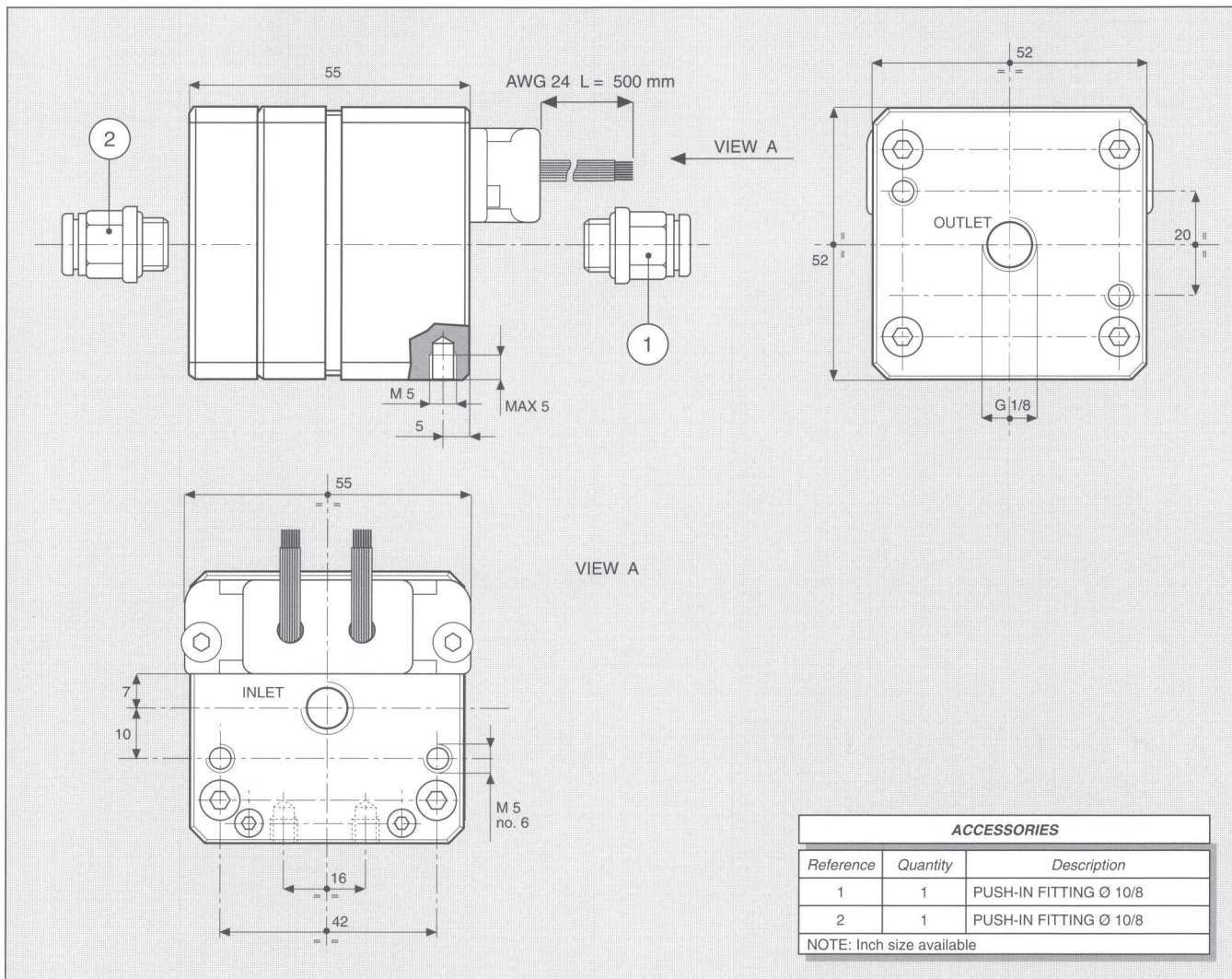
<b>2</b>	2/2
----------	-----

**• CONTROL TENSION**

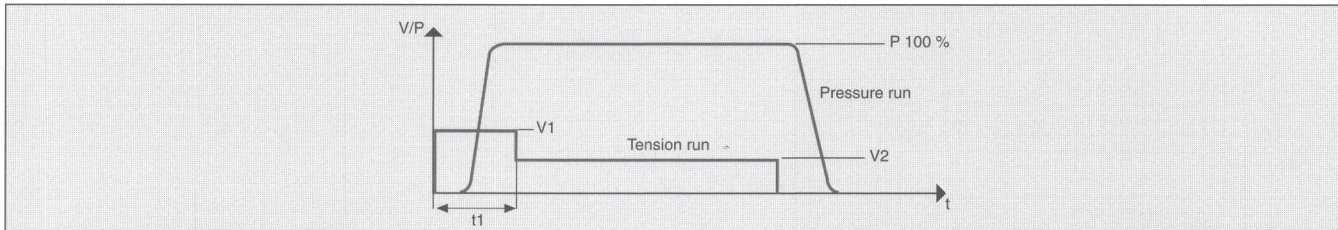
<b>KK</b>	Speed-up in tension	0.8 W
-----------	---------------------	-------

**• OPERATING PRESSURE**

	RANGE	MODELS
<b>3</b>	0 - 6 bar	All



**CHARACTERISTICS OF THE ELECTRICAL CONTROL - MODELS KK**



N.B. KK MODELS ARE CONTROLLED IN TENSION

V1 = 24 VDC	t1 = 3 ms	V2 = 5 VDC
-------------	-----------	------------

**ELECTRICAL PORT CONNECTION VERSION PX (64 LEVELS / 6-BIT)**

COLOUR	6 CONTROLS
BLACK	COMMON
BROWN	1
RED	1
ORANGE	1
YELLOW	2
GREEN	2
BLUE	3
VIOLET	4
GREY	5
WHITE	6

**ELECTRICAL PORT CONNECTION VERSION QX (256 LEVELS / 8-BIT)**

COLOUR	8 CONTROLS
BLACK	COMMON
BROWN	1
RED	1
ORANGE	2
YELLOW	3
GREEN	4
BLUE	5
VIOLET	6
GREY	7
WHITE	8