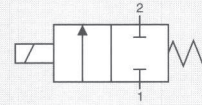


CONTROL: DIRECT PFM PNM PWM

N. 3 NC



GENERAL CHARACTERISTICS

FLUID	Non-lubricated dry air, neutral gases (-10 + 50°C)	
FILTRATION RATING	Min 40 micron	
TEMPERATURE	- 10 + 50°C (Standard version)	
RESPONSE TIME IN OPENING	24 < 5 ms	XX / KK < 1 ms
RESPONSE TIME IN CLOSING	24 < 2 ms	XX / KK < 1 ms
MAXIMUM FREQUENCY	200 Hz	500 Hz
WEIGHT	250 g	
PRODUCT LIFE EXPECTANCY	≥ 500 M/s cycles	
IP RATING	IP 62	

IDENTIFICATION CODE

	M	X	8	5	3	3	0	0	C	2	24
--	----------	----------	----------	----------	----------	----------	----------	----------	----------	----------	-----------

● **MAXIMUM FLOW RATE** (at 6 bar)

M	300 Nl / min
N	420 Nl / min (control tension XX KK)
O	520 Nl / min (control tension XX KK)

● **OUTLETS**

3	3 Outlets
----------	-----------

● **No. ELECTRICAL CONTROLS**

3	3 Controls
9	9 Controls

● **PORT CONNECTION**

0	Integrated cables IP 62 L = 500 mm
----------	------------------------------------

● **FUNCTION**

C	NC
----------	----

● **TYPE**

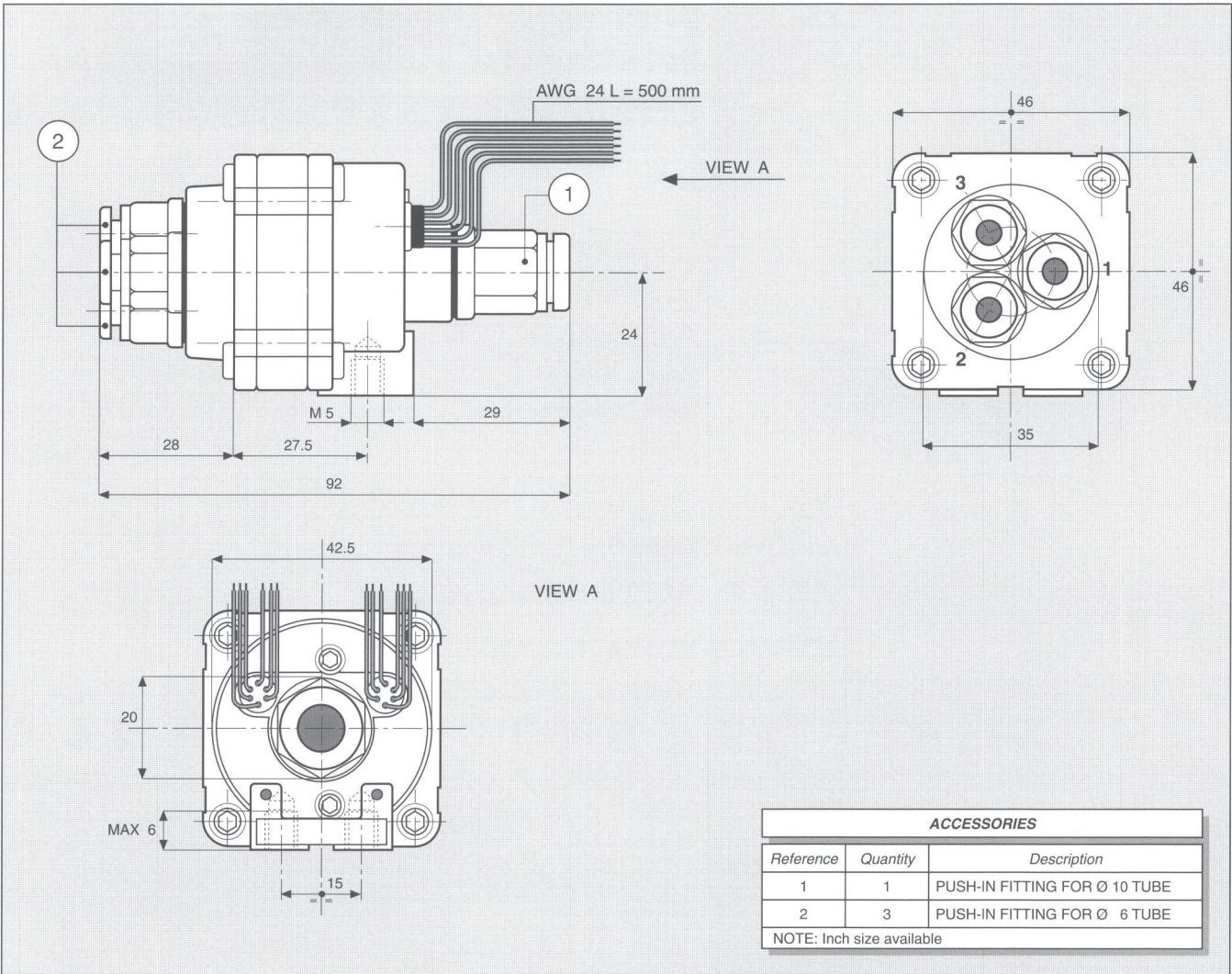
2	2/2
----------	-----

● **CONTROL TENSION**

24	24 VDC ± 10 %	2.9 ÷ 8.7 W
XX	Speed-up in current (48 VDC)	1.3 ÷ 4.0 W
KK	Speed-up in tension (24 VDC)	0.8 ÷ 2.5 W

● **OPERATING PRESSURE**

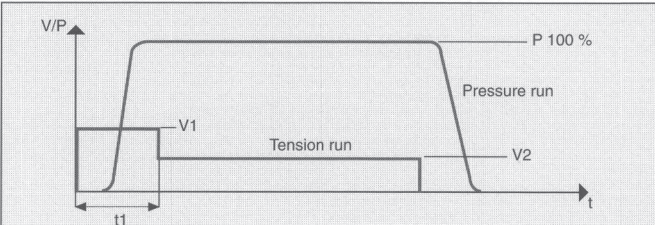
	RANGE	MODELS
0	2 - 8 bar	All



ACCESSORIES		
Reference	Quantity	Description
1	1	PUSH-IN FITTING FOR Ø 10 TUBE
2	3	PUSH-IN FITTING FOR Ø 6 TUBE

NOTE: Inch size available

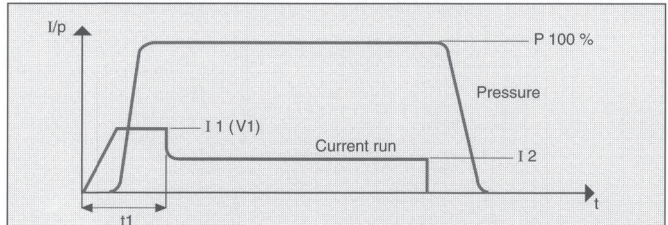
CHARACTERISTICS OF THE ELECTRICAL CONTROL - MODELS KK



N.B. KK MODELS ARE CONTROLLED IN TENSION

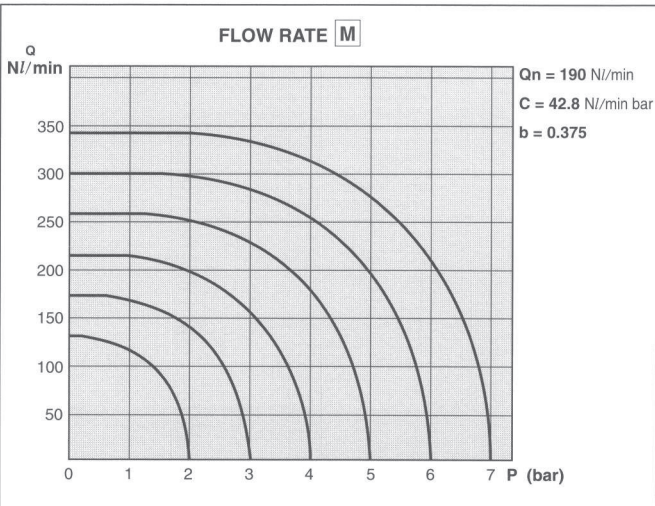
M	V 1 = 24 VDC	t 1 = 2 ms	V 2 = 5 VDC
N	V 1 = 24 VDC	t 1 = 2.5 ms	V 2 = 5 VDC
O	V 1 = 24 VDC	t 1 = 3.5 ms	V 2 = 5 VDC

CHARACTERISTICS OF THE ELECTRICAL CONTROL - MODELS XX



N.B. XX MODELS ARE CONTROLLED IN CURRENT

M	I 1 = 1 A	t 1 = 1.5 ms	I 2 = 0.3 A
N	I 1 = 1.5 A	t 1 = 1.5 ms	I 2 = 0.3 A
O	I 1 = 2.8 A	t 1 = 1.5 ms	I 2 = 0.3 A



ELECTRICAL PORT CONNECTION

COLOUR	3 CONTROLS	9 CONTROLS (OUTLET)
BLACK	COMMON	COMMON
BROWN	1	1 (1)
RED	2	2 (1)
ORANGE	3	3 (2)
YELLOW	—	4 (2)
GREEN	—	5 (2)
BLUE	—	6 (3)
VIOLET	—	7 (3)
GREY	—	8 (3)
WHITE	—	9 (1)