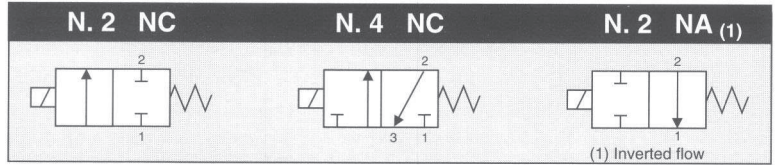


CONTROL: DIRECT PFM PWM



GENERAL CHARACTERISTICS

FLUID	Non-lubricated dry air, neutral gases (-10 + 50°C)	
FILTRATION RATING	Min 40 micron	
TEMPERATURE	- 10 + 50°C (Standard version)	
RESPONSE TIME IN OPENING	12 / JJ < 5 ms	KK < 2 ms
RESPONSE TIME IN CLOSING	12 / JJ < 2 ms	KK < 2 ms
MAXIMUM FREQUENCY	200 Hz	300 Hz
WEIGHT	350 g	
PRODUCT LIFE EXPECTANCY	≥ 500 M/s cycles	
IP RATING	IP 52 - IP 62 - IP 65	

IDENTIFICATION CODE

	H	X	7	5	8	8	E	2	R	R	K	K
--	---	---	---	---	---	---	---	---	---	---	---	---

• FLOW RATE (at 6 bar)

H	50 NI/min
B	80 NI/min
M	100 NI/min (ontrol tension JJ XX KK)

• VERSION

	Standard
H	HNBR Shutters

• No. ELECTRICAL CONTROLS

8	8 Controls
---	------------

• PORT CONNECTION

0	Integrated cables IP 62 L = 500 mm
E	Presetting for Easy connection IP 52 - IP 65

• SPECIAL PROTECTIONS

	Only with EASY IP 65 port connection
M	Stainless steel (INOX) flanges
N	EPOX BLACK varnished flanges

• OUTLETS

8	8 Outlets
---	-----------

• FUNCTIONS

R	N.6 NC N.2 NO
---	------------------

• TYPE

R	N.4 3/2 - N.2 2/2 N.2 2/2 Inverted flow
---	--

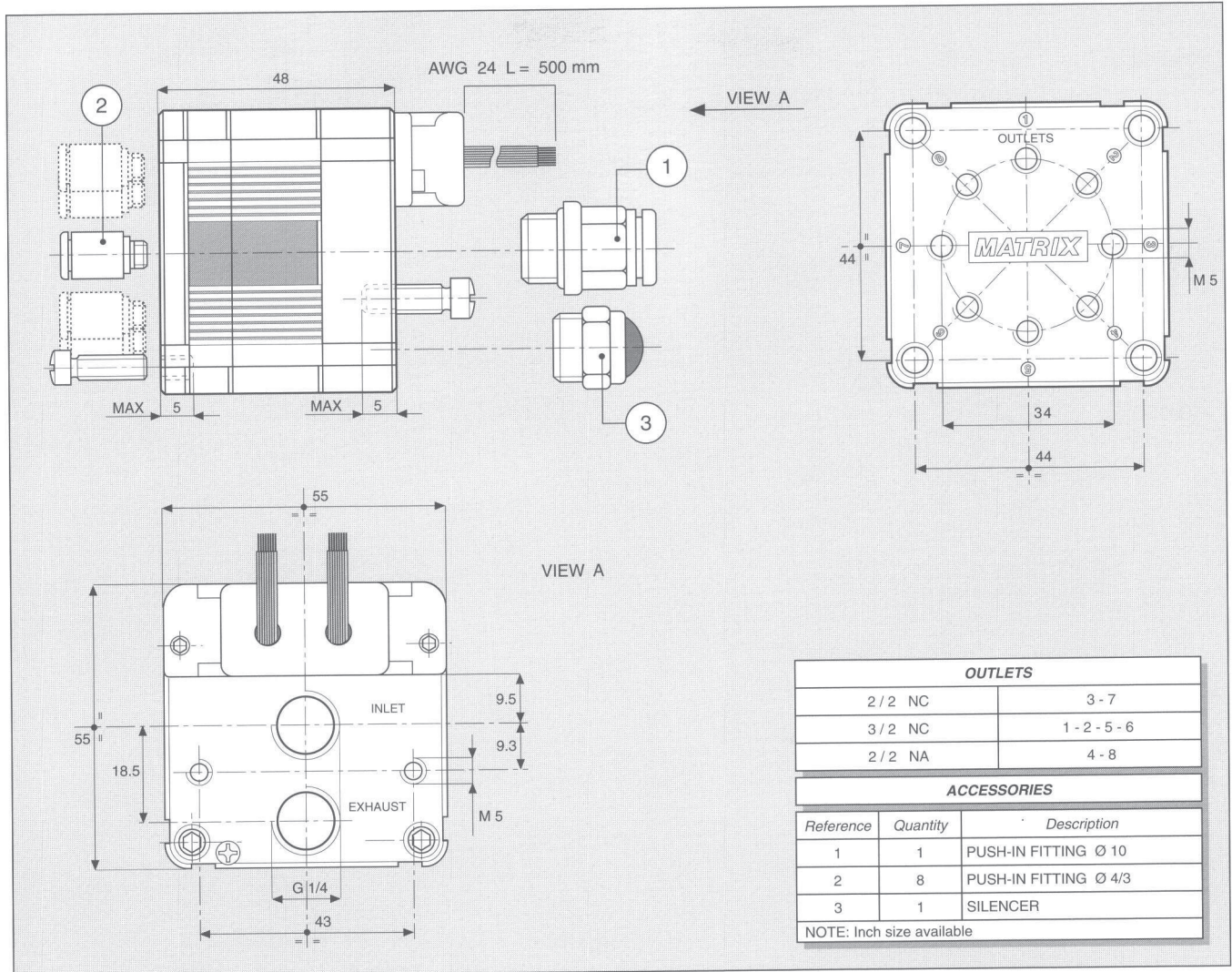
• CONTROL TENSION

12	12 VDC ± 10 %	ED 100 %	1.4 W
JJ	24 VDC ± 10 %	ED 100 % ⁽¹⁾	1.9 W
KK	Speed-up in tension	ED 100 % ⁽¹⁾	—

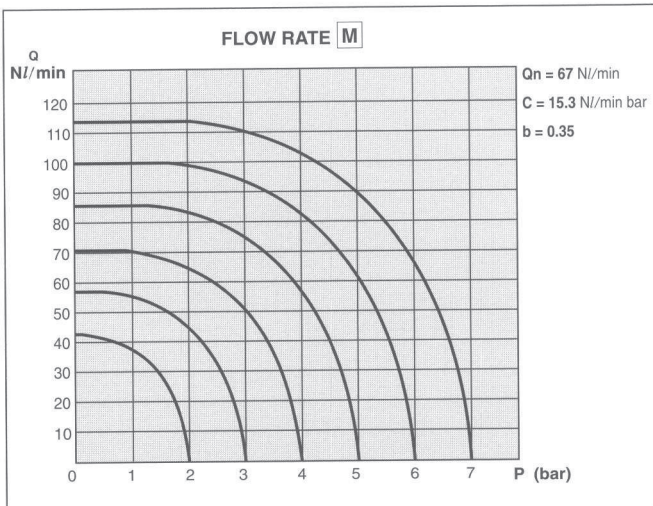
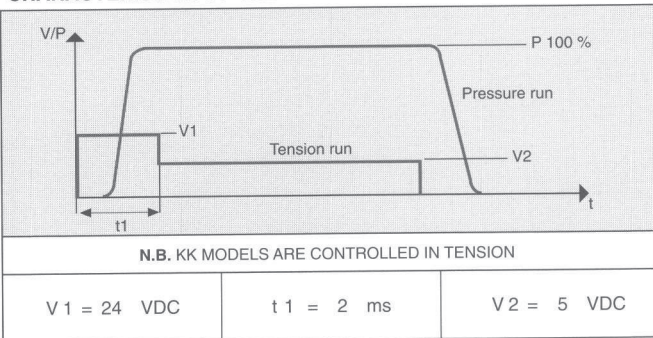
(1) Only with Electronic Driver Boards PRB or UDB

• OPERATING PRESSURE

	RANGE	MODELS
1	0 - 4 bar	All
2	4 - 8 bar	All
3	0 - 8 bar KK
8	2 - 6 bar	All



CHARACTERISTICS OF THE ELECTRICAL CONTROL - MODELS KK



ELECTRICAL PORT CONNECTION

	COLOUR	OUTLET
BLACK 1 - 2	BROWN	1 3/2 NC
	RED	2 3/2 NC
	ORANGE	3 2/2 NC
	YELLOW	4 2/2 NA (1)
BLACK 3 - 4	GREEN	5 3/2 NC
	BLUE	6 3/2 NC
	VIOLET	7 2/2 NC
	GREY	8 2/2 NA (1)
BLACK	COMMON	COMMON

(1) Inverted flow