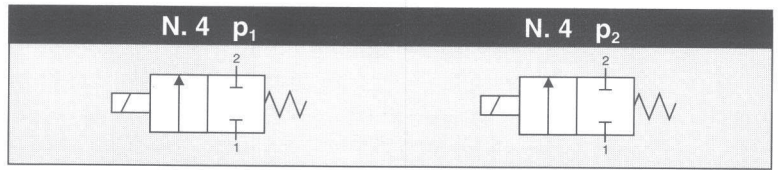


CONTROL: **DIRECT**



## GENERAL CHARACTERISTICS

FLUID	Non-lubricated dry air, neutral gasesi (-10 + 50°C)		
FILTRATION RATING	Min 40 micron		
TEMPERATURE	- 10 + 50°C (Standard version)		
RESPONSE TIME IN OPENING	12 / 24 < 7 ms	JJ < 5 ms	XX / KK < 2 ms
RESPONSE TIME IN CLOSING	12 / 24 < 3 ms	JJ < 2 ms	XX / KK < 2 ms
MAXIMUM FREQUENCY	100 Hz	200 Hz	300 Hz
WEIGHT	350 g		
PRODUCT LIFE EXPECTANCY	≥ 500 M/s cycles		
IP RATING	IP 52 - IP 62 - IP 65		

## IDENTIFICATION CODE

	H	X	7	5	8	8	E	Z	C	2	24
--	---	---	---	---	---	---	---	---	---	---	----

● **OUTLETS**

8	8 Outlets
---	-----------

● **FLOW RATE (at 6 bar)**

H	50 Nl/min
B	80 Nl/min
M	100 Nl/min (control tension JJ XX KK)

● **VERSION**

	Standard
H	HNBR Shutters

● **No. ELECTRICAL CONTROLS**

8	8 Controls
D	8 Controls / Integrated diodes with common 0 V
G	8 Controls / Integrated diodes with common 12/24 V

● **FUNCTION**

C	NC
---	----

● **TYPE**

2	2/2
---	-----

● **CONTROL TENSION**

12	12 VDC ± 10 %	ED 100 %	1.4 W
24	24 VDC ± 10 %	ED 100 %	1.2 W
JJ	24 VDC ± 10 %	ED 100 % <sup>(1)</sup>	1.9 W
XX	Speed-up in current	ED 100 % <sup>(1)</sup>	—
KK	Speed-up in tension	ED 100 % <sup>(1)</sup>	—

(1) Only with Electronic Driver Boards PRB or UDB

● **OPERATING PRESSURE**

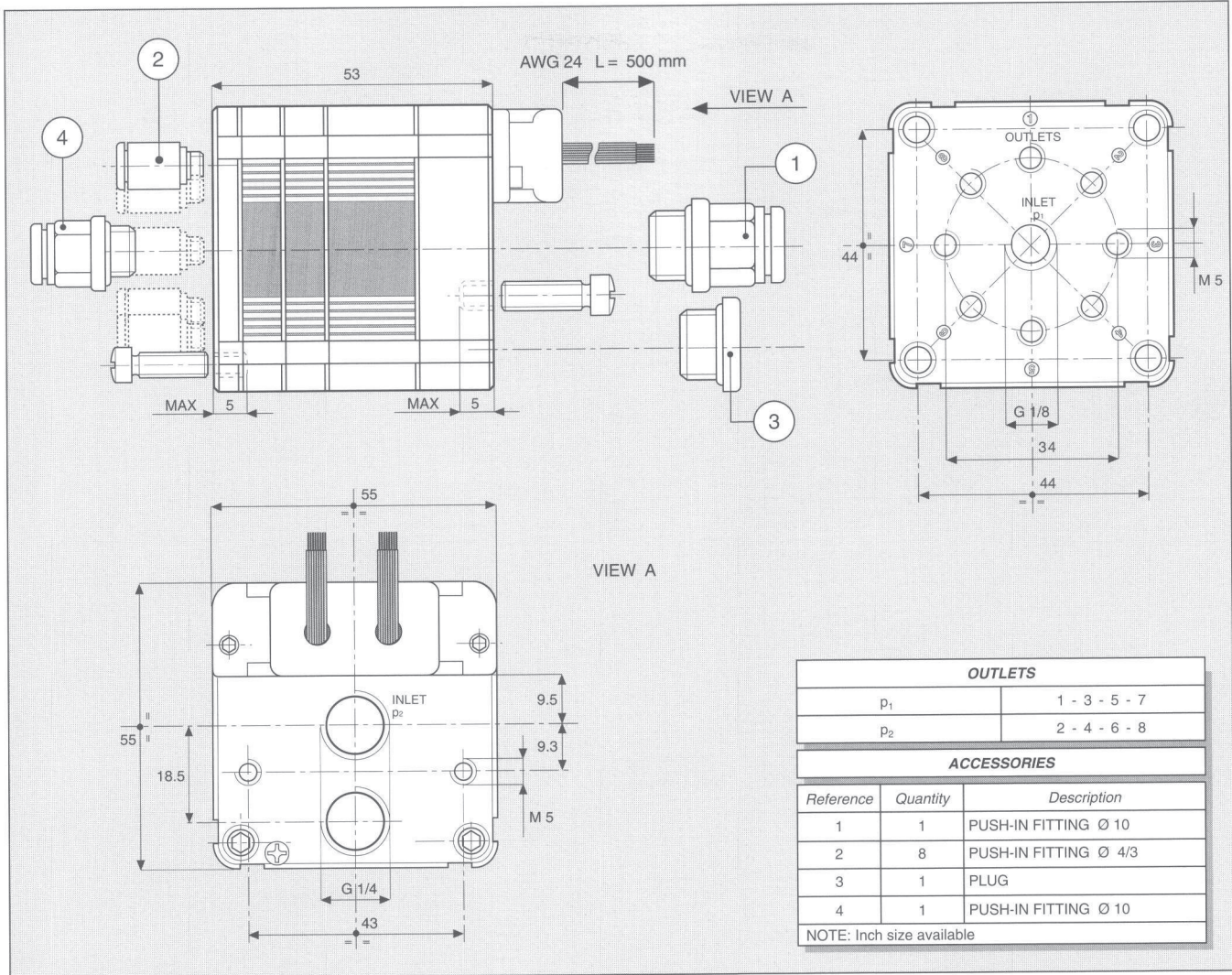
	RANGE	MODELS
Z	p <sub>1</sub> 0 - 4 bar p <sub>2</sub> 4 - 8 bar	All
X	On demand	Custom

● **PORT CONNECTION**

0	Integrated cables IP 62 L = 500 mm
E	Presetting for Easy connection IP 52 - IP 65

● **SPECIAL PROTECTIONS**

	Only with EASY IP 65 port connection
M	Stainless steel (INOX) flanges
N	EPOX BLACK varnished flanges



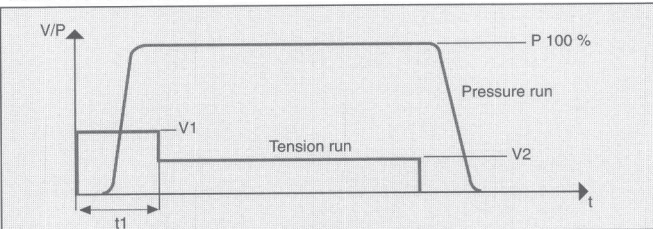
OUTLETS	
p <sub>1</sub>	1 - 3 - 5 - 7
p <sub>2</sub>	2 - 4 - 6 - 8

ACCESSORIES		
Reference	Quantity	Description
1	1	PUSH-IN FITTING Ø 10
2	8	PUSH-IN FITTING Ø 4/3
3	1	PLUG
4	1	PUSH-IN FITTING Ø 10

NOTE: Inch size available

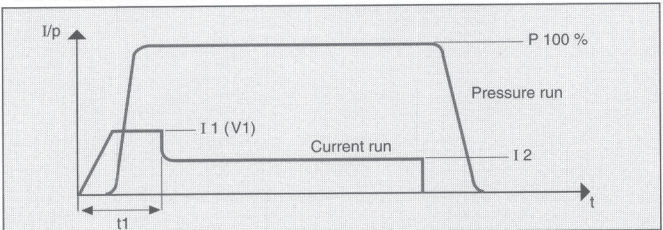
**CHARACTERISTICS OF THE ELECTRICAL CONTROL - MODELS KK**



N.B. KK MODELS ARE CONTROLLED IN TENSION

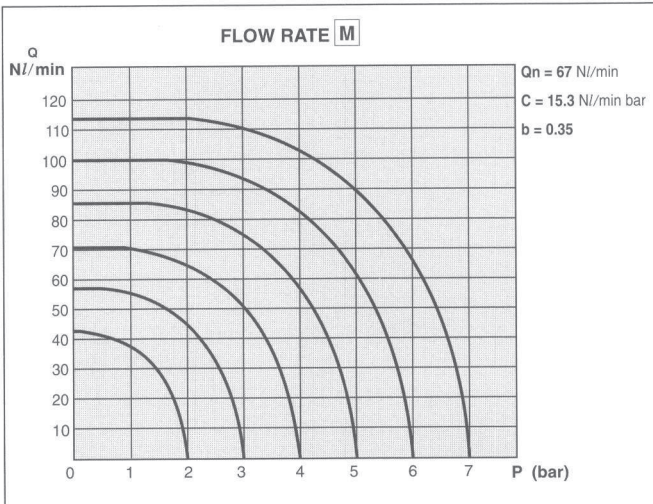
V 1 = 24 VDC      t 1 = 2 ms      V 2 = 5 VDC

**CHARACTERISTICS OF THE ELECTRICAL CONTROL - MODELS XX**



N.B. XX MODELS ARE CONTROLLED IN CURRENT

I 1 = 0.7 A      t 1 = 2 ms      I 2 = 0.3 A



**ELECTRICAL PORT CONNECTION**

COLOUR	8 CONTROLS
BLACK	COMMON
BROWN	1
RED	2
ORANGE	3
YELLOW	4
GREEN	5
BLUE	6
VIOLET	7
GREY	8