

CONTROL:

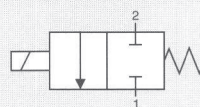
DIRECT

PFM

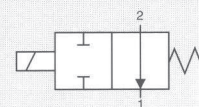
PNM

PWM

N. 2 NC



N. 2 NO



GENERAL CHARACTERISTICS

FLUID	Non-lubricated dry air, neutral gases (-10 + 50°C)		
FILTRATION RATING	Mix 40 micron		
TEMPERATURE	- 10 + 50°C (Standard version)		
RESPONSE TIME IN OPENING	12 / 24 < 7 ms	JJ < 5 ms	XX / KK < 2 ms
RESPONSE TIME IN CLOSING	12 / 24 < 3 ms	JJ < 2 ms	XX / KK < 2 ms
MAXIMUM FREQUENCY	100 Hz	200 Hz	300 Hz
WEIGHT	330 g		
PRODUCT LIFE EXPECTANCY	≥ 500 M/s cycles		
IP RATING	IP 52 - IP 62 - IP 65		

IDENTIFICATION CODE

H X 7 5 2 2 0 V C 2 24

OUTLETS

2 | 2 Outlets

ORIFICES

H	Ø eq = 1.8 mm
B	Ø eq = 2.6 mm
M	Ø eq = 3.0 mm (control tension JJ XX KK)

VERSION

	Standard
H	HNBR Shutters

No. ELECTRICAL CONTROLS

2	2 Controls
4	4 Controls
8	8 Controls
C	4 Controls / Integrated diodes with common 0 V
D	8 Controls / Integrated diodes with common 0 V
F	4 Controls / Integrated diodes with common 12/24 V
G	8 Controls / Integrated diodes with common 12/24 V

FUNCTION

A	NO
C	NC

TYPE

2 | 2/2

CONTROL TENSION

12	12 VDC ± 10 %	ED 100 %	1.4 ÷ 5.8W
24	24 VDC ± 10 %	ED 100 %	1.2 ÷ 5.0W
JJ	24 VDC ± 10 %	ED 100 % ⁽¹⁾	1.9 ÷ 7.6W
XX	Speed-up in current	ED 100 % ⁽¹⁾	—
KK	Speed-up in tension	ED 100 % ⁽¹⁾	—

⁽¹⁾ Only with Electronic Driver Boards PRB or UDB

OPERATING PRESSURE

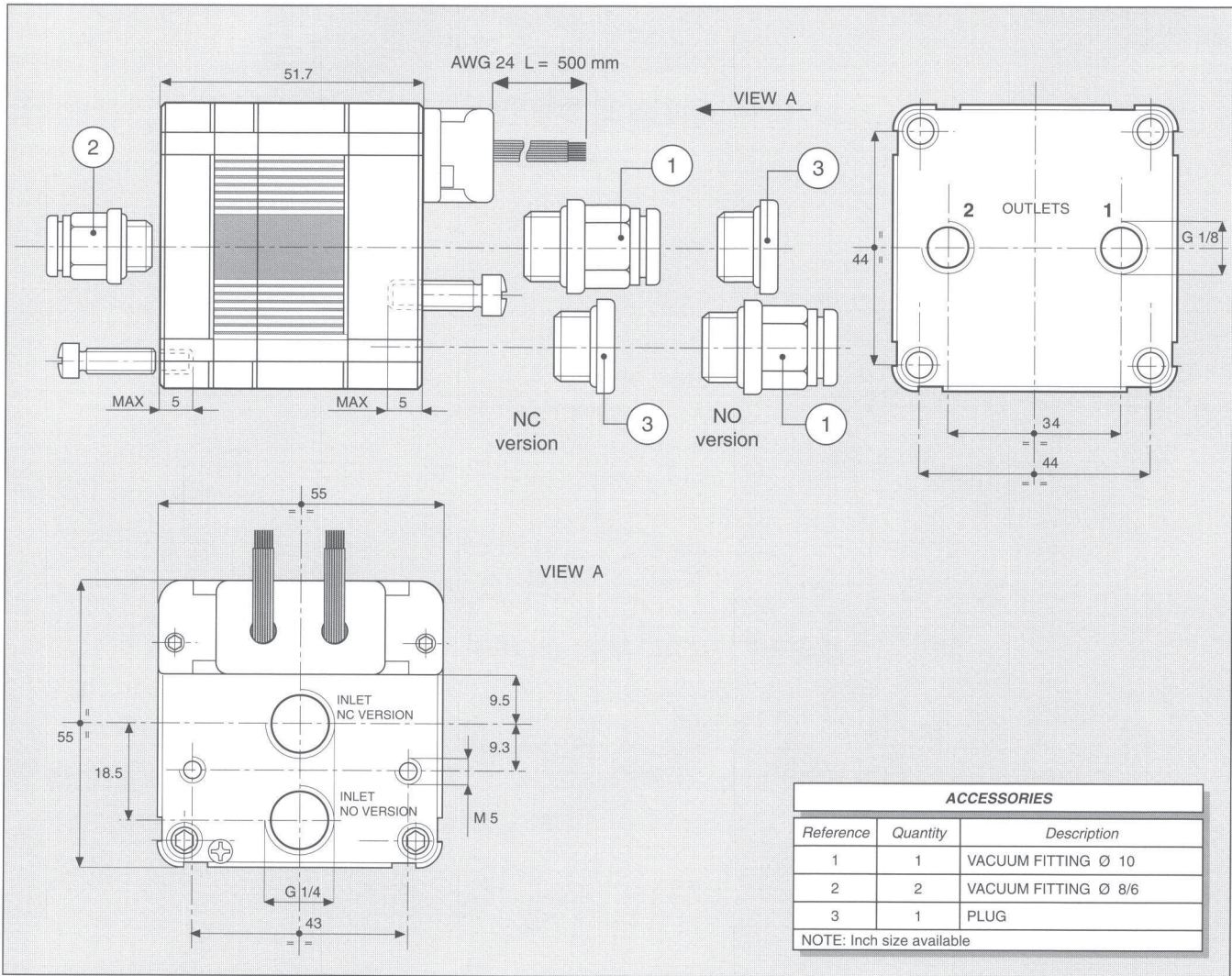
	RANGE	MODELS
V	10 ⁻⁵ Torr	All

PORT CONNECTION

0	Integrated cables IP 62 L = 500 mm
E	Presetting for Easy connection IP 52 - IP 65 (only 4 and 8 controls)

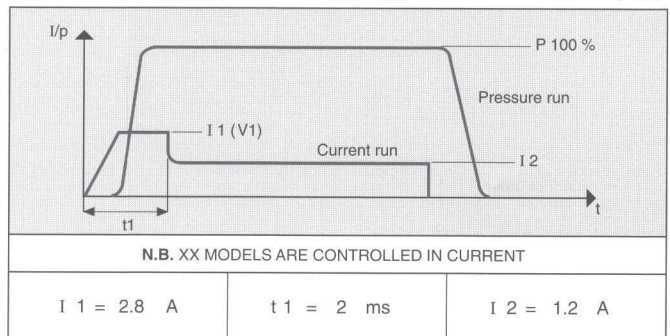
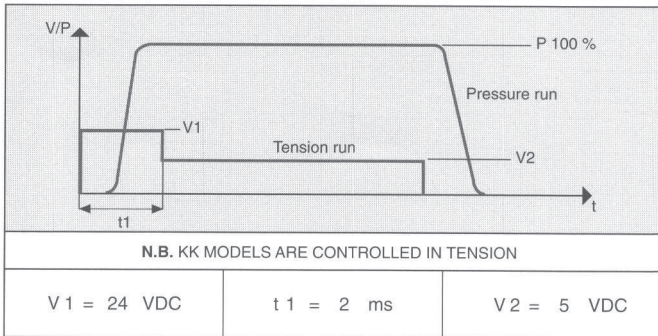
SPECIAL PROTECTIONS

	Only with EASY IP 65 port connection
M	Stainless steel (INOX) flanges
N	EPOX BLACK varnished flanges



CHARACTERISTICS OF THE ELECTRICAL CONTROL - MODELS KK

CHARACTERISTICS OF THE ELECTRICAL CONTROL - MODELS XX



ELECTRICAL PORT CONNECTION

COLOUR	2 CONTROLS (SINGLE CABLES)	2 CONTROLS EASY CONNECTION IP 52	4 CONTROLS (OUTLET)	8 CONTROLS (OUTLET)
BLACK	COMMON	COMMON	COMMON	COMMON
BROWN	1	1	1 (1)	1 (1)
RED	2	—	2 (1)	2 (1)
ORANGE	—	2	3 (2)	3 (1)
YELLOW	—	—	4 (2)	4 (1)
GREEN	—	—	—	5 (2)
BLUE	—	—	—	6 (2)
VIOLET	—	—	—	7 (2)
GREY	—	—	—	8 (2)