

CONTROL:

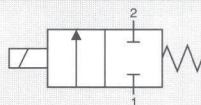
DIRECT

PFM

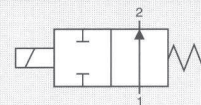
PNM

PWM

N. 2 NC



N. 2 NO



GENERAL CHARACTERISTICS

FLUID	Non-lubricated dry air, neutral gases (-10 + 50°C)		
FILTRATION RATING	Min 40 micron		
TEMPERATURE	- 10 + 50°C (Standard version)		
RESPONSE TIME IN OPENING	12 / 24 < 7 ms	JJ < 5 ms	XX / KK < 2 ms
RESPONSE TIME IN CLOSING	12 / 24 < 3 ms	JJ < 2 ms	XX / KK < 2 ms
MAXIMUM FREQUENCY	100 Hz	200 Hz	300 Hz
WEIGHT	330 g		
PRODUCT LIFE EXPECTANCY	≥ 500 M/s cycles		
IP RATING	IP 52 - IP 62 - IP 65		

IDENTIFICATION CODE

	H	X	7	5	2	2	0	2	C	2	24
--	---	---	---	---	---	---	---	---	---	---	----

OUTLETS

2	2 Outlets
---	-----------

FLOW RATE (at 6 bar)

H	200 Nl/min
B	310 Nl/min
M	360 Nl/min (control tension JJ XX KK)

VERSION

	Standard
H	HNBR Shutters

No. ELECTRICAL CONTROLS

2	2 Controls
4	4 Controls
8	8 Controls
C	4 Controls / Integrated diodes with common 0 V
D	8 Controls / Integrated diodes with common 0 V
F	4 Controls / Integrated diodes with common 12 / 24 V
G	8 Controls / Integrated diodes with common 12 / 24 V

PORT CONNECTION

0	Integrated cables IP 62 L = 500 mm
E	Presetting for Easy connection IP 52 - IP 65 (only 4 and 8 controls)

SPECIAL PROTECTIONS

	Only with EASY IP 65 port connection
M	Stainless steel (INOX) flanges
N	EPOX BLACK varnished flanges

FUNCTION

A	NO
C	NC

TYPE

2	2/2
---	-----

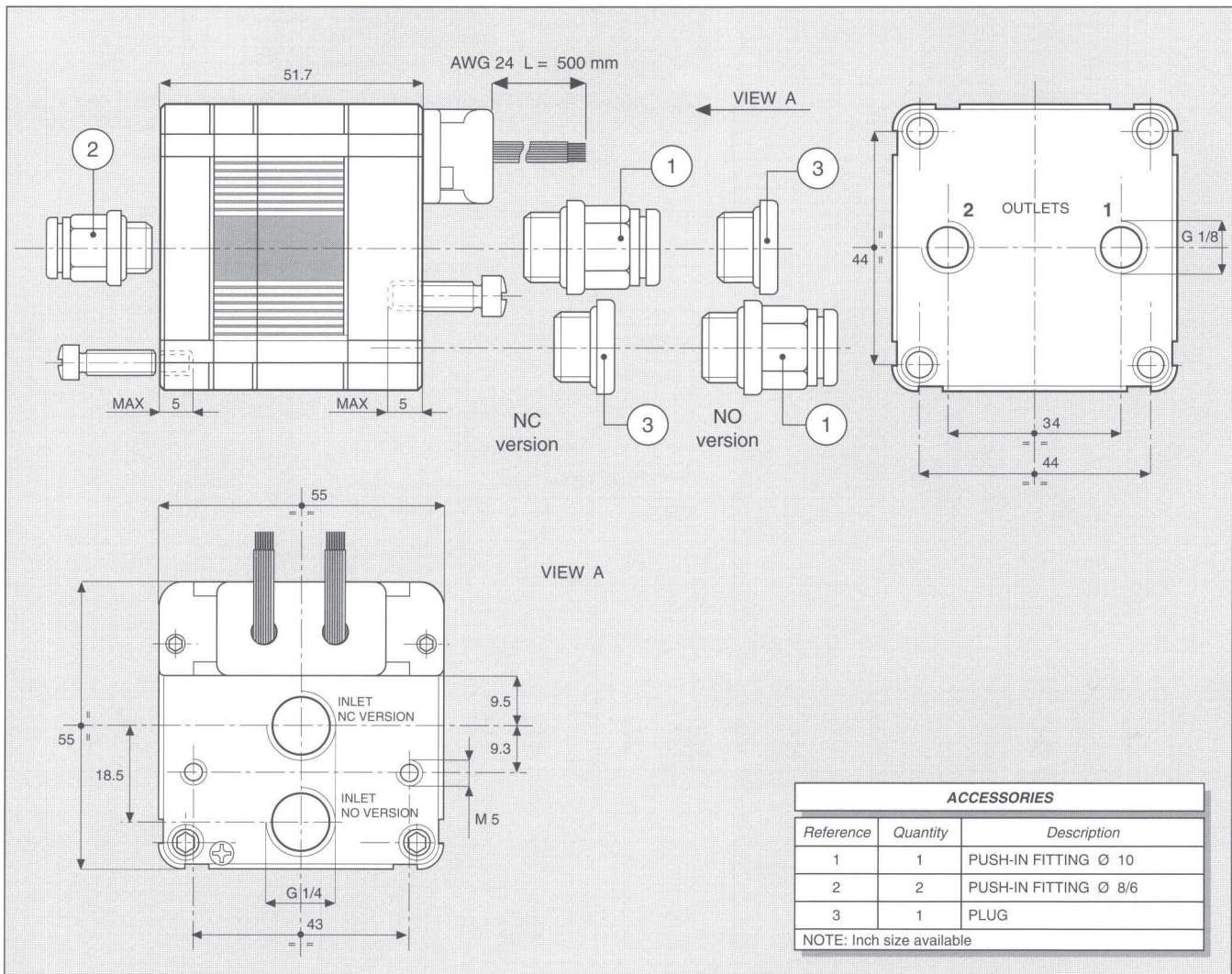
CONTROL TENSION

12	12 VDC ± 10 %	ED 100 %	1.4 ÷ 5.8 W
24	24 VDC ± 10 %	ED 100 %	1.2 ÷ 5.0 W
JJ	24 VDC ± 10 %	ED 100 % ⁽¹⁾	1.9 ÷ 7.6 W
XX	Speed-up in current	ED 100 % ⁽¹⁾	—
KK	Speed-up in tension	ED 100 % ⁽¹⁾	—

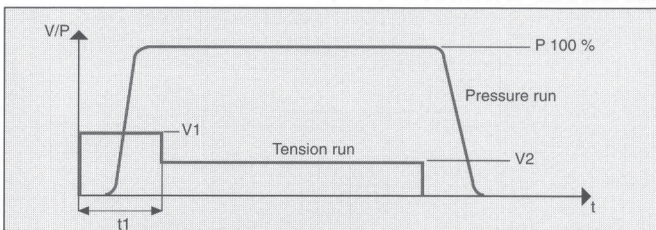
(1) Only with Electronic Driver Boards PRB or UDB

OPERATING PRESSURE

	RANGE	MODELS
1	0 - 4 bar	All
2	4 - 8 bar	All
3	0 - 8 bar XX / KK
8	2 - 6 bar	All



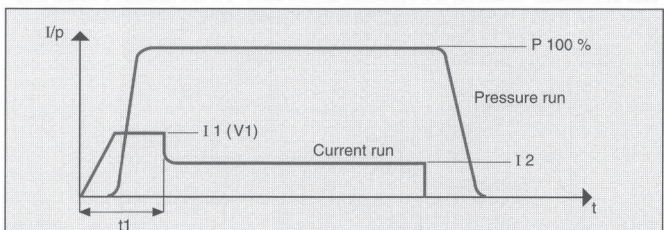
CHARACTERISTICS OF THE ELECTRICAL CONTROL - MODELS KK



N.B. KK MODELS ARE CONTROLLED IN TENSION

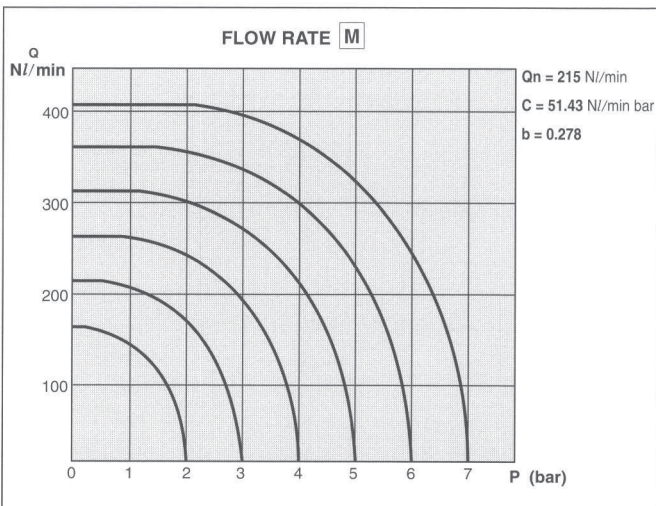
V1 = 24 VDC t1 = 2 ms V2 = 5 VDC

CHARACTERISTICS OF THE ELECTRICAL CONTROL - MODELS XX



N.B. XX MODELS ARE CONTROLLED IN CURRENT

I1 = 2.8 A t1 = 2 ms I2 = 1.2 A



ELECTRICAL PORT CONNECTION

COLOUR	2 CONTROLS (SINGLE CABLES)	2 CONTROLS EASY CONNECTION IP 52	4 CONTROLS (OUTLET)	8 CONTROLS (OUTLET)
BLACK	COMMON	COMMON	COMMON	COMMON
BROWN	1	1	1 (1)	1 (1)
RED	2	—	2 (1)	2 (1)
ORANGE	—	2	3 (2)	3 (1)
YELLOW	—	—	4 (2)	4 (1)
GREEN	—	—	—	5 (2)
BLUE	—	—	—	6 (2)
VIOLET	—	—	—	7 (2)
GREY	—	—	—	8 (2)