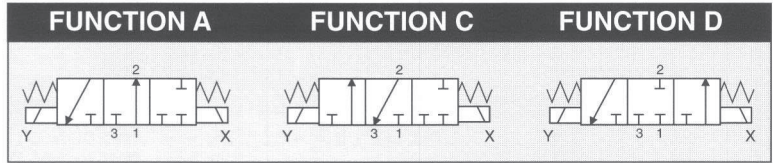


CONTROL: **DIRECT** **PFM** **PNM** **PWM**



**GENERAL CHARACTERISTICS**

<b>FLUID</b>	Non-lubricated dry air, neutral gases (-10 + 50°C)		
<b>FILTRATION RATING</b>	Min 40 micron		
<b>TEMPERATURE</b>	- 10 + 50°C (Standard version)		
<b>RESPONSE TIME IN OPENING</b>	12 / 24 < 7 ms	JJ < 5 ms	XX / KK < 2 ms
<b>RESPONSE TIME IN CLOSING</b>	12 / 24 < 3 ms	JJ < 2 ms	XX / KK < 2 ms
<b>MAXIMUM FREQUENCY</b>	100 Hz	200 Hz	300 Hz
<b>WEIGHT</b>	340 g		
<b>PRODUCT LIFE EXPECTANCY</b>	≥ 500 M/s cycles		
<b>IP RATING</b>	IP 52 - IP 62 - IP 65		

**IDENTIFICATION CODE**

	<b>M</b>	<b>K</b>	<b>7</b>	<b>5</b>	<b>2</b>	<b>4</b>	<b>E</b>	<b>1</b>	<b>A</b>	<b>2</b>	<b>24</b>
--	----------	----------	----------	----------	----------	----------	----------	----------	----------	----------	-----------

**• NUMBER OF POSITIONS**

<b>K</b>	3 Positions
----------	-------------

**• FLOW RATE (at 6 bar)**

<b>H</b>	100 Nl/min
<b>B</b>	160 Nl/min
<b>M</b>	200 Nl/min (control tensiono <b>JJ</b> <b>XX</b> <b>KK</b> )

**• VERSION**

	Standard
<b>H</b>	HNBR Shutters

**• No. ELECTRICAL CONTROLS**

<b>4</b>	4 Control
<b>C</b>	4 Controls / Integrated diodes with common 0 V
<b>F</b>	4 Controls / Integrated diodes with common 12/24 V

**• OUTLETS**

<b>2</b>	2 Outlets
----------	-----------

**• FUNCTIONS**

<b>A</b>	Outlet NO - Exhaust NC
<b>C</b>	Outlet NC - Exhaust NO
<b>D</b>	Outlet NC - Exhaust NC

**• TYPE**

<b>2</b>	2 Pairs 2/2
----------	-------------

**• CONTROL TENSION**

<b>12</b>	12 VDC ± 10 %	ED 100 %	2.9 W
<b>24</b>	24 VDC ± 10 %	ED 100 %	2.5 W
<b>JJ</b>	24 VDC ± 10 %	ED 100 % <sup>(1)</sup>	3.8 W
<b>XX</b>	Speed-up in current	ED 100 % <sup>(1)</sup>	—
<b>KK</b>	Speed-up in tension	ED 100 % <sup>(1)</sup>	—

(1) Only with Electronic Driver Boards PRB or UDB

**• OPERATING PRESSURE**

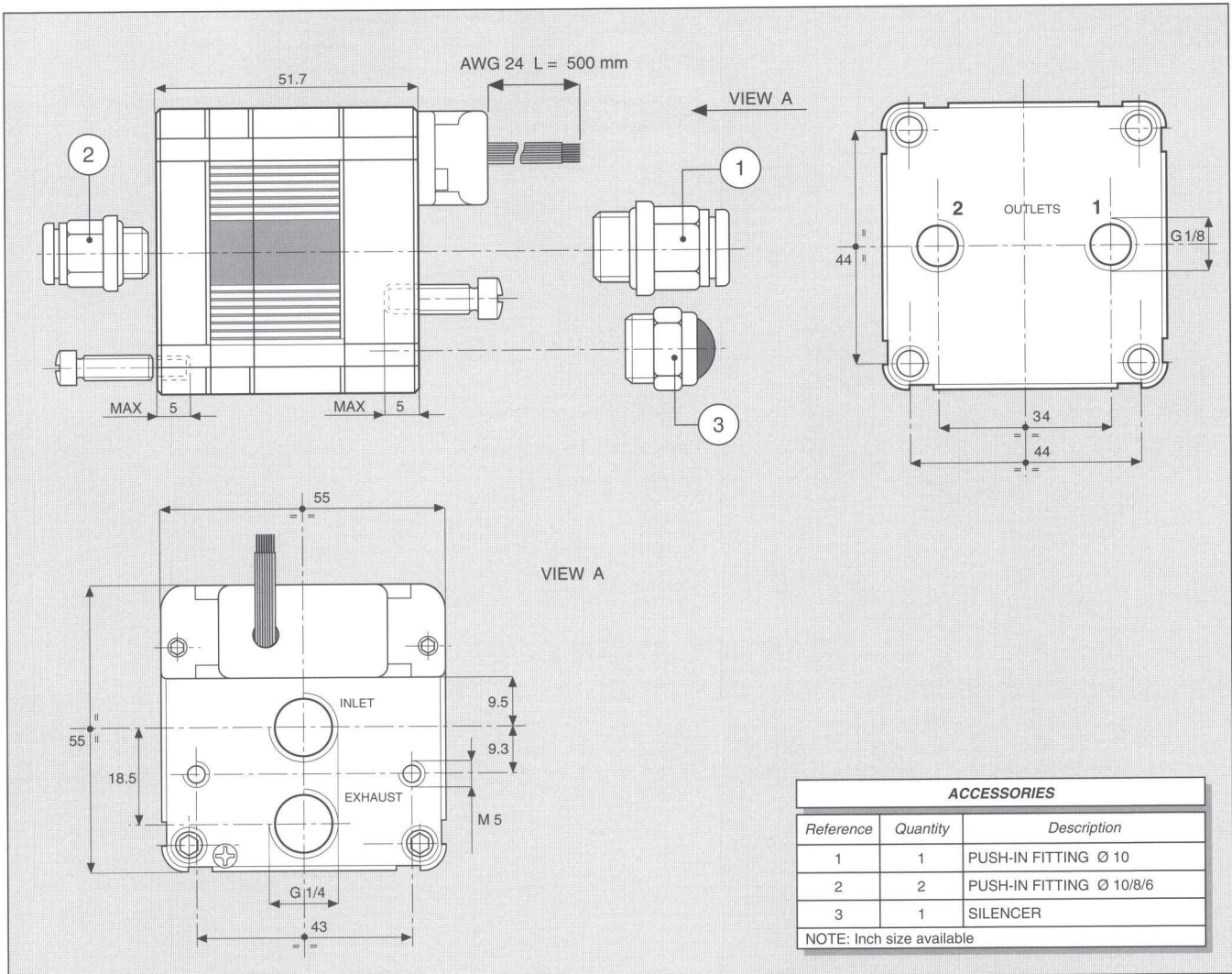
	RANGE	MODELS
<b>1</b>	0 - 4 bar	All

**• PORT CONNECTION**

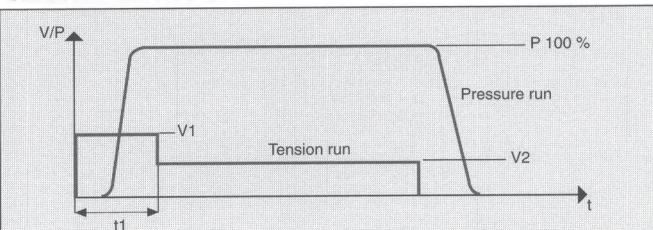
<b>0</b>	Integrated cables IP 62 L = 500 mm
<b>E</b>	Presetting for Easy connection IP 52 - IP 65

**• SPECIAL PROTECTIONS**

	Only with EASY IP 65 port connection
<b>M</b>	Stainless steel (INOX) flanges
<b>N</b>	EPOX BLACK varnished flanges



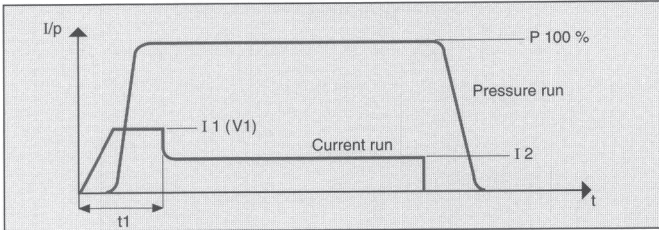
CHARACTERISTICS OF THE ELECTRICAL CONTROL - MODELS KK



N.B. KK MODELS ARE CONTROLLED IN TENSION

V1 = 24 VDC      t1 = 2 ms      V2 = 5 VDC

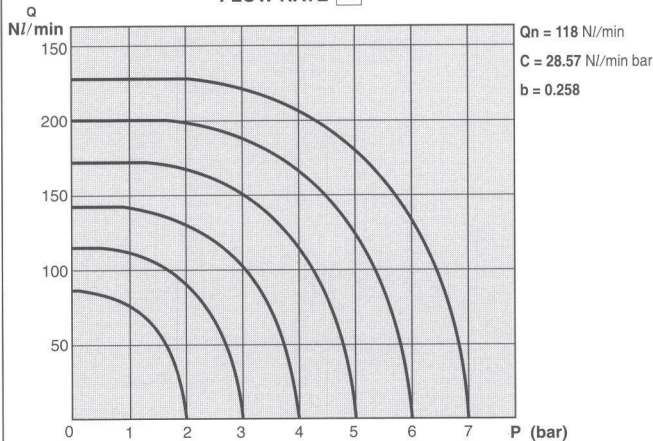
CHARACTERISTICS OF THE ELECTRICAL CONTROL - MODELS XX



N.B. XX MODELS ARE CONTROLLED IN CURRENT

I1 = 0.7 A      t1 = 2 ms      I2 = 0.3 A

FLOW RATE **M**



ELECTRICAL PORT CONNECTION

COLOUR	8 CONTROLS (OUTLET)
BLACK	COMMON
BROWN	1 (1)
RED	2 (1)
ORANGE	3 (1)
YELLOW	4 (1)
GREEN	5 (2)
BLUE	6 (2)
VIOLET	7 (2)
GREY	8 (2)