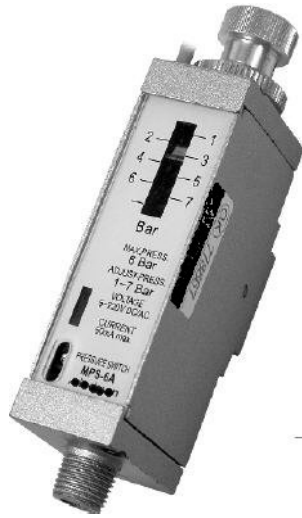
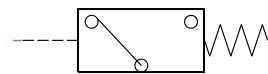


# MPS series

## PNEUMATIC PRESSURE SWITCH



Symbol:



### Specification:

Model	MPS-6A	MPS-6A-R
Fitting method	PT 1/8 ( for pipe-thread fitting )	O-ring: S4 ( for O-ring fitting )
Ambient temperature	□ 5~□ 60 □ (No freezing)	
Operating pressure range	8.16 kgf/cm <sup>2</sup> ( 8 Bar)	
Proof pressure	10.2 kgf/cm <sup>2</sup> ( 10 Bar)	
Pressure setting range	1.02~7.14 kgf/cm <sup>2</sup> ( 1~7 Bar)	
Operation output	Normal open ON ( Red led lighting up ) above value	
Sensor switch	RCE Reed switch / Normal open Voltage range: 5~220V DC/AC Max. Current: 50mA	
Weight	185 g	189 g

### Order example:

MPS – 6A – R

MODEL

Blank: By pipe-thread fitting  
R: by O-ring fitting

